



UNIVERSITÀ
CATTOLICA
del Sacro Cuore



The GAVeCeLT bundle for prevention of catheter-related upper extremities and central venous thrombosis

Mauro Pittiruti and the GAVeCeLT

Catholic University Hospital, Rome - Italy

Insertion-bundle to prevent CRT

PICC/CICC insertion

1) Proper choice of the vein

Consider vein diameter according to catheter size: catheter diameter should not exceed 1/3 of vein diameter should be equal or inferior to the vein diameter (in **mm**)

Nifong 2011



Practical point:

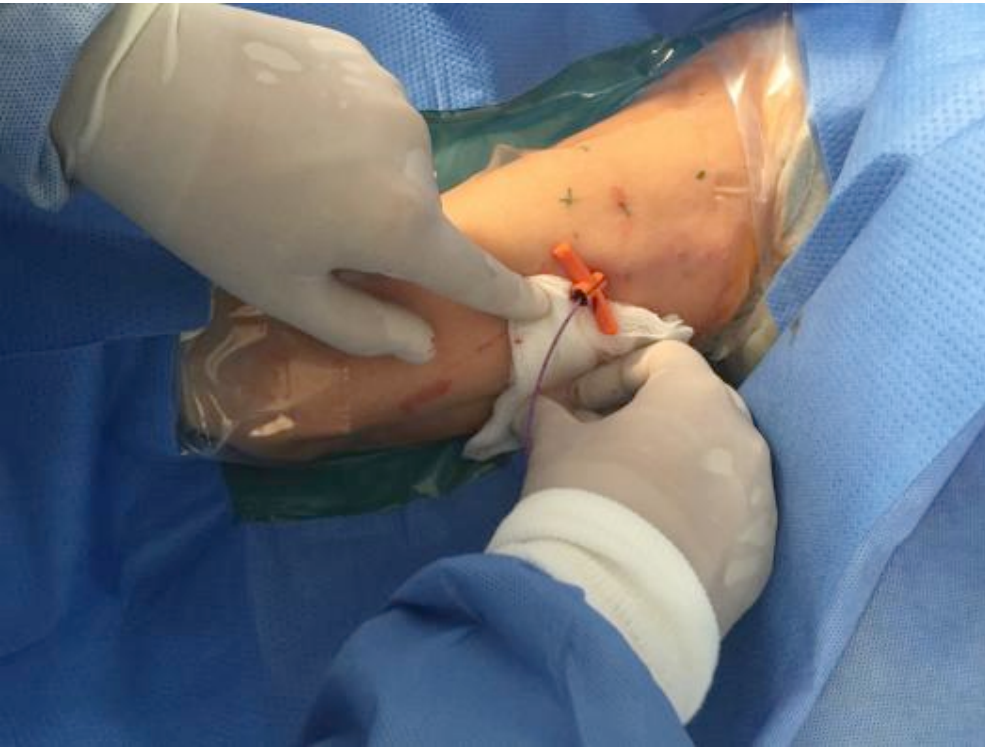
Catheter diameter (in **Fr**) should be equal or inferior to the vein diameter (in **mm**)

2) US-guided venipuncture + microintroducer kit



Reduced endothelial damage is
associated with a lower thrombosis
rate

3) Intracavitary EKG for intraprocedural tip location



Avoids suboptimal or definitively wrong tip positions; tip malposition is one of the strongest risk factor for thrombosis

4) Glue + sutureless device + transparent dressing + tunnel/exit site



Optimal stabilization of the device
avoids in-out catheter movements
and associated endothelial damage
and thrombosis



CONCLUSIONS

Conclusions

1) Catheter-related thrombosis should not be seen as a 'heaven-sent', inevitable complication: most of the times, CRT is due to 'bad choices' of the clinician (inappropriate choice of the VAD and/or inappropriate insertion/maintenance technique and/or inappropriate use of the VAD)

Conclusions

2) The philosophy of 'targeting zero' should be applied to ALL COMPLICATIONS: not only to infective complications, but also to insertion-related complications, lumen occlusion, VAD dislodgement, and – last but not least – catheter related thrombosis.

Conclusions

3) Prevention of CRT may be harder than infection prevention in some respects (we cannot control the patient's predisposing factors; we might need pharmacological prevention) but it may be easier, too (as most of the iatrogenic factors favoring CRT can be prevented by a proper insertion bundle).

Take home message

This is the GAVeCeLT bundle for CRT prevention:

1. Proper choice of the vein
2. Minimal trauma during venipuncture
3. Appropriate tip location
4. Proper securement

PLEASE, TRY THIS AT HOME ...

