

Risk of Venous Thromboembolism Between PICCs and CVCs

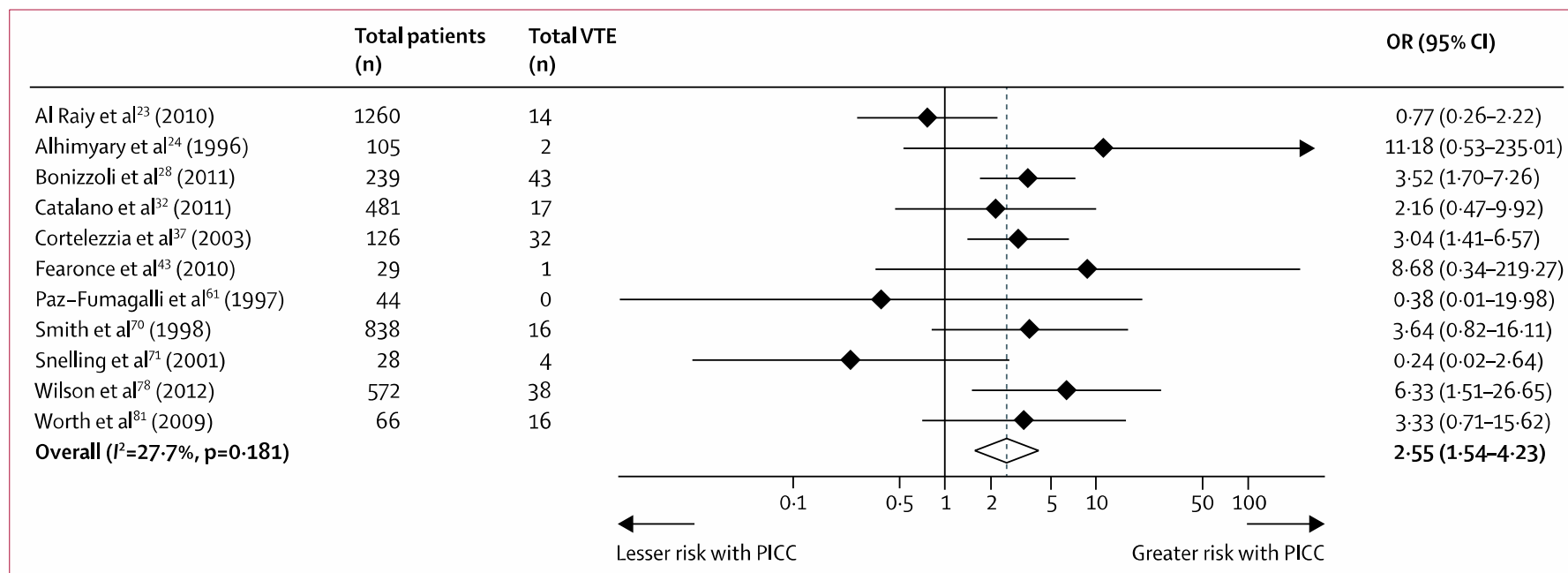


Figure 4: Risk of venous thromboembolism between peripherally inserted central catheters and central venous catheters in studies with a comparison group
 Forest plot showing odds of development of upper-extremity DVT in patients with peripherally inserted central catheters versus central venous catheters.
 VTE=venous thromboembolism. OR=odds ratio. PICC=peripherally inserted central catheter.