

From: The Michigan Appropriateness Guide for Intravenous Catheters (MAGIC): Results From a Multispecialty Panel Using the RAND/UCLA Appropriateness Method Michigan Appropriateness Guide for Intravenous Catheters (MAGIC)

Ann Intern Med. 2015;163(6_Supplement):S1-S40. doi:10.7326/M15-0744

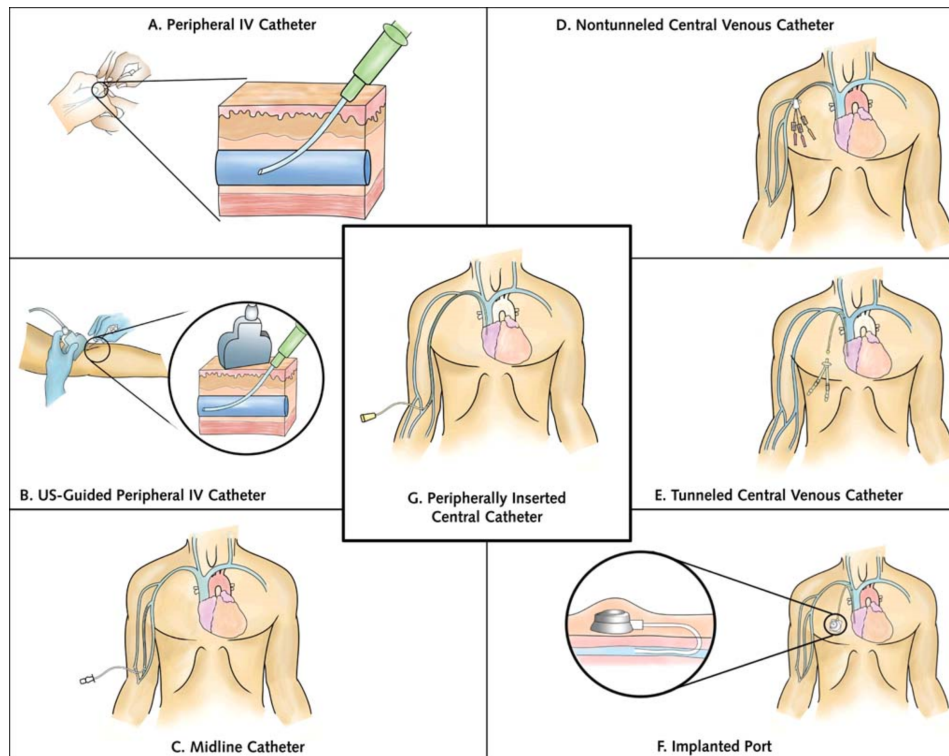


Figure Legend:

Vascular access devices reviewed to formulate appropriateness ratings.